

Weichet nur betrübte Schatten

BWV 202

JOHANN SEBASTIAN BACH

Adagio



[p]

6



Recitativo

Musical notation for the Recitativo section, measures 1-4. The first staff shows a bass clef, common time signature (C), and a melodic line with a slur over the first two notes. Fingerings are indicated below the notes: 6, 5, 6, 5. The second staff continues the melodic line with a slur over the first four notes, followed by a quarter note and a half note. Fingerings are indicated below: 7, 5, 5, 6, 5.

Allegro assai

Aria

Musical notation for the Aria section, measures 1-15. The first staff shows a bass clef, 12/8 time signature, and a melodic line with a slur over the first two notes. The second staff continues the melodic line with a slur over the first four notes, followed by a quarter note and a half note. The third staff continues the melodic line with a slur over the first four notes, followed by a quarter note and a half note. The fourth staff continues the melodic line with a slur over the first four notes, followed by a quarter note and a half note. The fifth staff continues the melodic line with a slur over the first four notes, followed by a quarter note and a half note. The sixth staff continues the melodic line with a slur over the first four notes, followed by a quarter note and a half note. The seventh staff continues the melodic line with a slur over the first four notes, followed by a quarter note and a half note. The eighth staff continues the melodic line with a slur over the first four notes, followed by a quarter note and a half note. The ninth staff continues the melodic line with a slur over the first four notes, followed by a quarter note and a half note. The tenth staff continues the melodic line with a slur over the first four notes, followed by a quarter note and a half note. The eleventh staff continues the melodic line with a slur over the first four notes, followed by a quarter note and a half note. The twelfth staff continues the melodic line with a slur over the first four notes, followed by a quarter note and a half note. The thirteenth staff continues the melodic line with a slur over the first four notes, followed by a quarter note and a half note. The fourteenth staff continues the melodic line with a slur over the first four notes, followed by a quarter note and a half note. The fifteenth staff continues the melodic line with a slur over the first four notes, followed by a quarter note and a half note.

4

17



19



21



23



25



27



29



30

Da Capo



Recitativo

[Arioso]



6



♩
5

Allegro

Aria

Musical score for the Aria section, measures 1-44. The score is written in bass clef with a key signature of one sharp (F#) and a common time signature (C). The tempo is marked *Allegro*. The music consists of a single melodic line with various rhythmic patterns, including eighth and sixteenth notes, and rests. Measure numbers 5, 9, 13, 17, 21, 25, 29, 33, 37, 41, and 44 are indicated on the left side of the staves.

Recitativo

Musical score for the Recitativo section, measures 1-9. The score is written in bass clef with a key signature of one sharp (F#) and a common time signature (C). The tempo is marked *Recitativo*. The music consists of a single melodic line with various rhythmic patterns, including eighth and sixteenth notes, and rests. Measure numbers 6 and 9 are indicated on the left side of the staves.



108



118



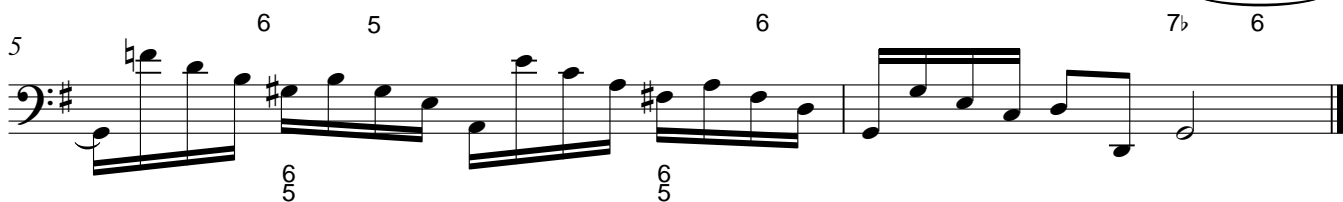
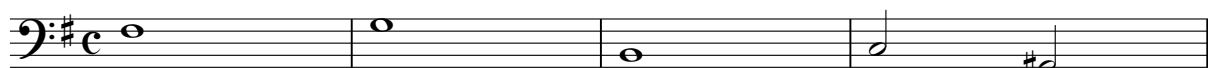
127



135



Recitativo



Gavotte



4



10



16



22



27

Da Capo

